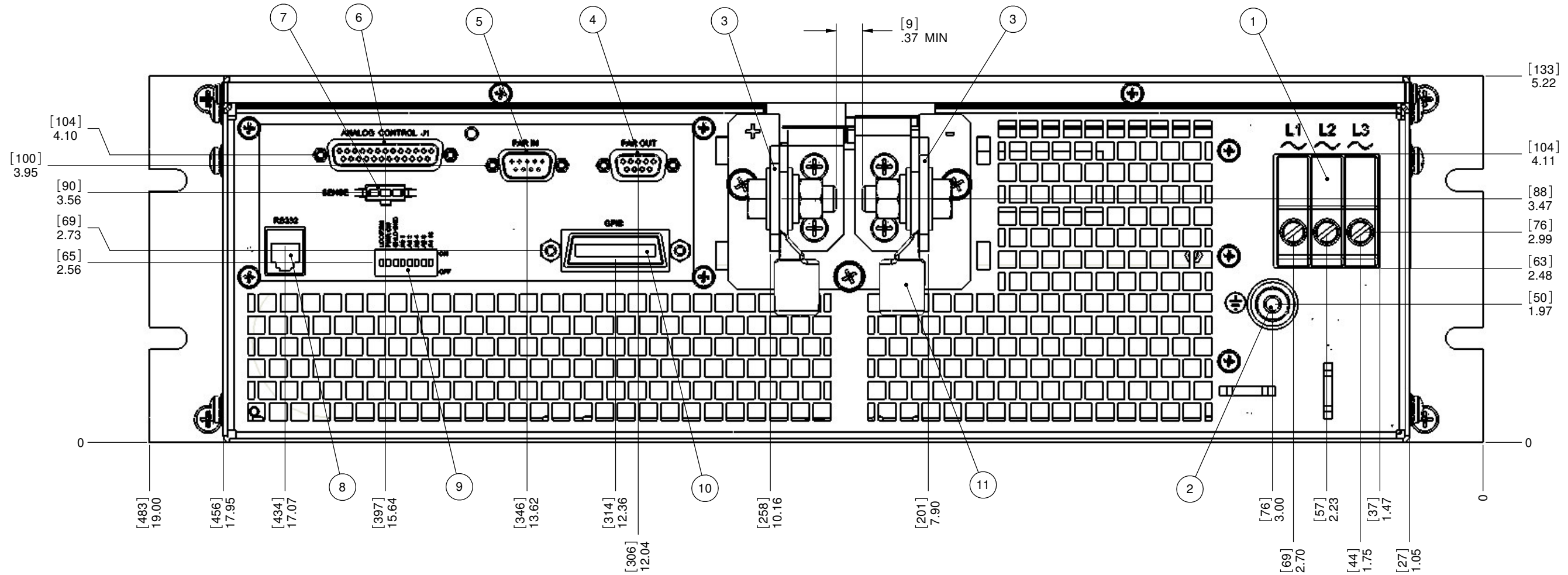
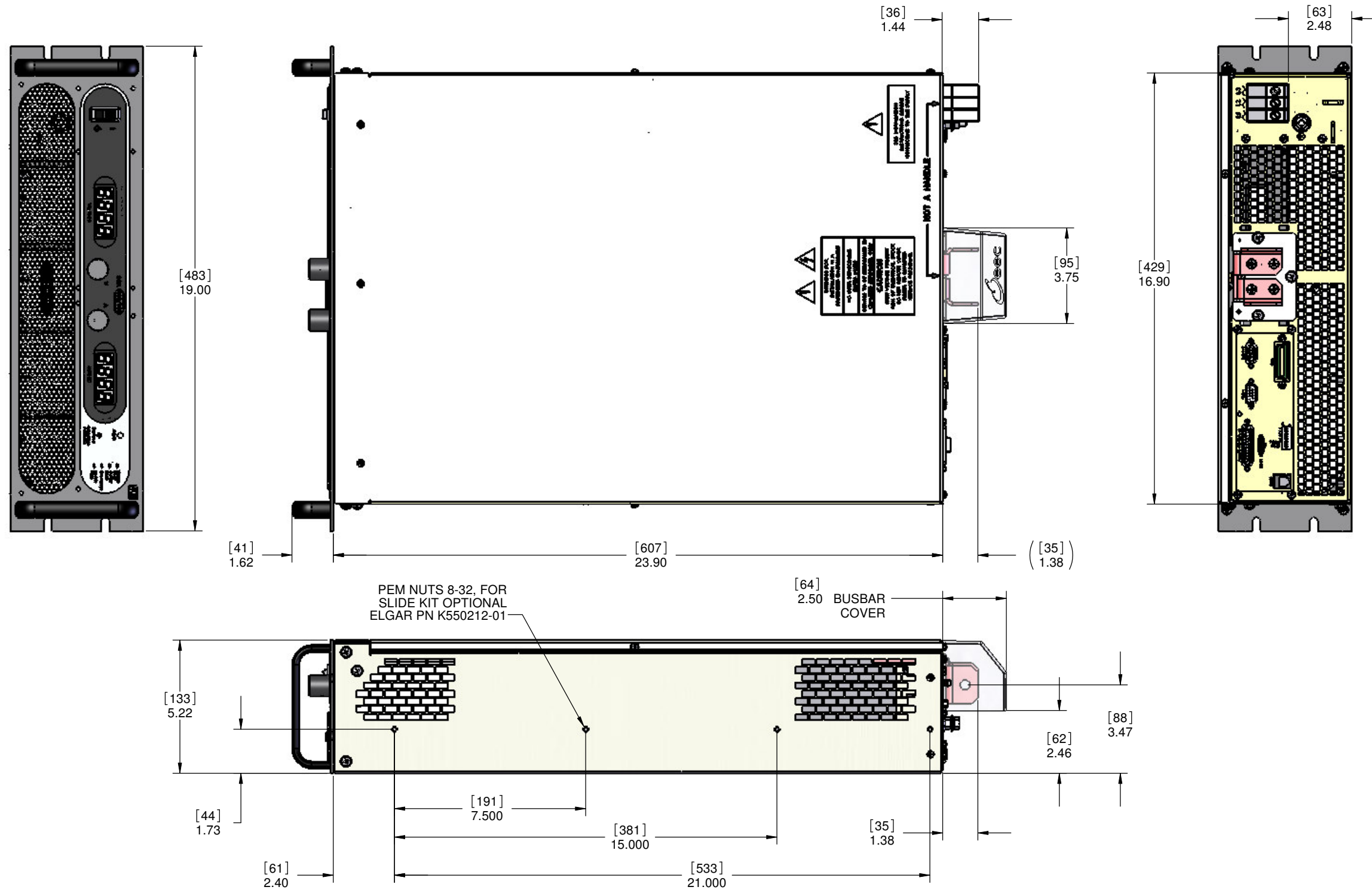


NOTES:

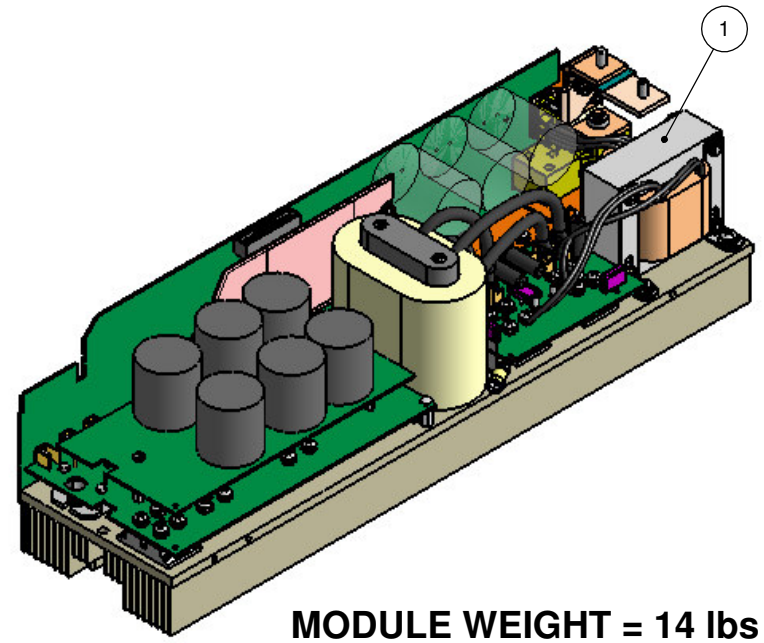
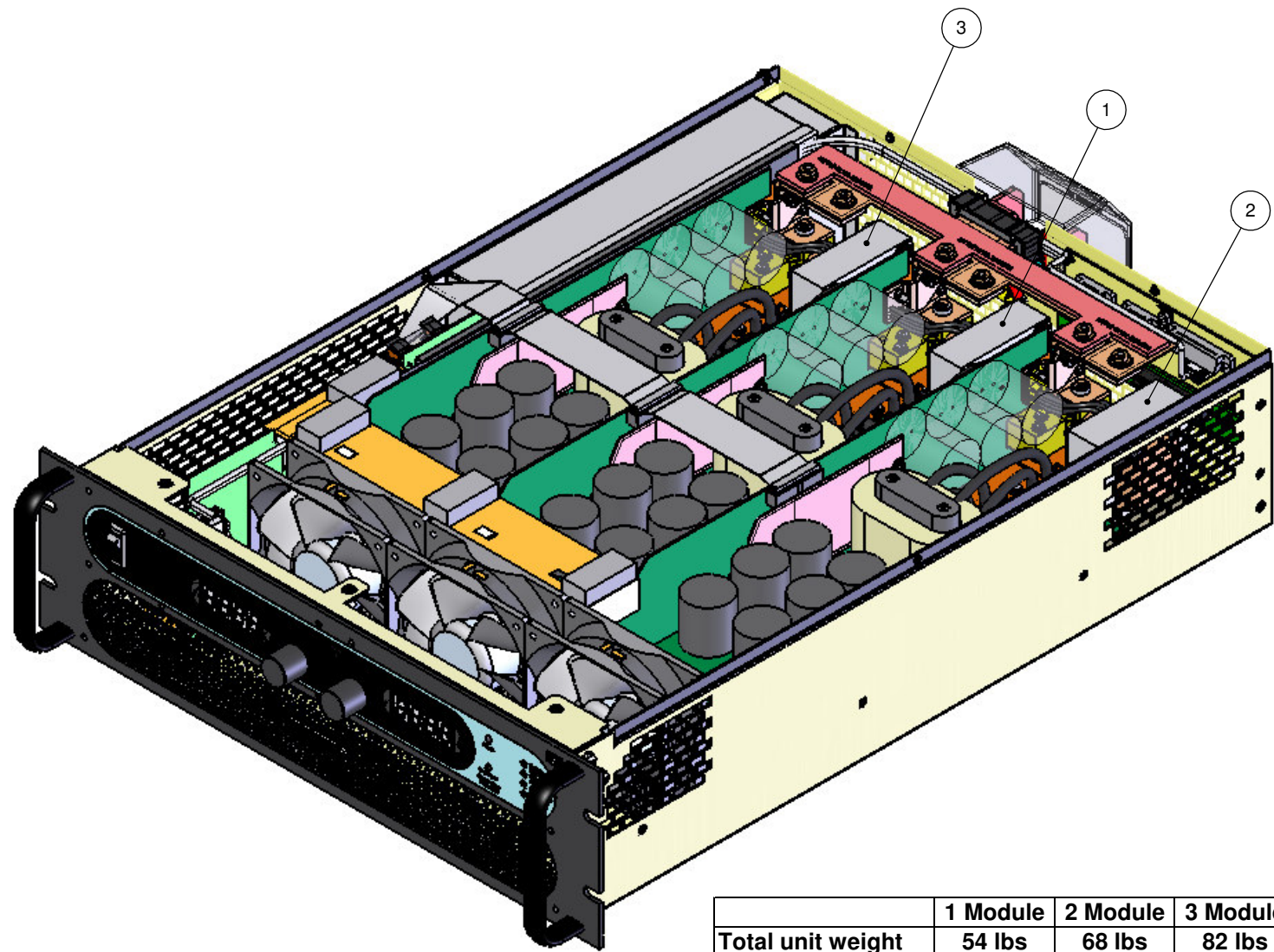
- | | |
|---|--|
| ① CONNECTOR, PHOENIX CONTACT HDFKV 16-VP.
ELGAR PN 893-100-02 | ⑥ CONNECTOR, (SKT) 25P D-SUB |
| ② CHASSIS GROUND (1/4-20 STUD) | ⑦ CONNECTOR, MOLEX 39-01-4033
ELGAR PN 09-070-000-04 |
| ③ OUTPUT TERMINAL HAS MOUNTING HOLE FOR
3/8-16 HEX BOLT (HARDWARE ARE SHOWN FOR
INSTALLATION REFERENCE ONLY.) | ⑧ CONNECTOR, RS232 |
| ④ CONNECTOR, (SKT) 9P D-SUB | ⑨ DIP SWITCH |
| ⑤ CONNECTOR, (PIN) 9P D-SUB | ⑩ CONNECTOR, GPIB |
| | ⑪ CABLE LUG IS SHOWN FOR
INSTALLATION REFERENCE ONLY. |



CHASSIS BACK VIEW
40V, 60-600V



CHASSIS DIMENSIONS
40V, 60-600V



MODULE WEIGHT = 14 lbs

	1 Module	2 Module	3 Module
Total unit weight	54 lbs	68 lbs	82 lbs

SG40 CHASSIS AND MODULE